



Vol. 24/25

## A kitchen that knows what matters

At Electrolux, the philosophy is simple: life in the kitchen should be seamless and intuitive.

That's why they've developed a new range with smart, sustainable features and clean lines for an effortless experience. So, you can concentrate on the things that make you happy: making and sharing great food with the people you love.

## Swedish thinking. Better living.





## EOE8P09X

Pyro Multifunction Steel  
Touch Control, Food Probe, Stainless Steel



### Features

- Pyrolytic cleaning
- Multifunction combines Ultrafan® fan cooking with other cooking functions, meaning you can choose the best setting to suit your cooking needs
- Ultrafan® Cooking
- Fan controlled defrosting
- Turbo grilling - combines grill and fan for a spit roast effect
- Temperature probe
- Removable door and glass panes for easy cleaning
- Cool door - with 4 glass panes for added safety while you cook
- Child lock for added safety
- 'A' energy class

### Technical info

Cut-out dimensions (mm)  
590 (H) x 560 (W) x 550 (D)

Product dimensions (mm)  
594 (H) x 595 (W) x 567 (D)

Price €899



## EOF6P46X

Pyro Multifunction Steel  
Rotary Controls, Stainless Steel



### Features

- Pyrolytic cleaning
- Multifunction combines Ultrafan® fan cooking with other cooking functions, meaning you can choose the best setting to suit your cooking needs
- Ultrafan® Cooking
- Fan controlled defrosting
- Turbo grilling - combines grill and fan for a spit roast effect
- Retractable oven controls with LED display
- Removable door and glass panes for easy cleaning
- Cool door - with 4 glass panes for added safety while you cook
- Child lock for added safety
- 'A' energy class

### Technical info

Cut-out dimensions (mm)  
590 (H) x 560 (W) x 550 (D)

Product dimensions (mm)  
594 (H) x 595 (W) x 567 (D)

Price €745



## EOD6C46X2

Catalytic Multifunction Steel  
Rotary Controls Stainless Steel with antifingerprint coating



### Features

- Built-in oven
- Multifunctional oven with ring heating element
- Oven energy class: A
- Oven cooking functions: Bottom heat, Conventional/Traditional cooking, Defrost, Grilling, Light, Moist fan baking, Pizza setting, True fan cooking, Turbo grilling
- Oven cavity with 3 baking levels
- Retractable knobs
- Electronic oven functions overview: Acoustic signal, Duration, Minute minder, Time
- Halogen oven lighting
- Catalytic stayclean oven lining
- Easy to clean door
- Cooling fan

### Technical info

Cut-out dimensions (mm)  
590 (H) x 560 (W) x 550 (D)

Product dimensions (mm)  
594 (H) x 595 (W) x 567 (D)

Price €570



## EOD6C46K2

Catalytic Multifunction Black  
Rotary Controls, Black Finish



### Features

- Built-in oven
- Multifunctional oven with ring heating element
- Oven energy class: A
- Oven cooking functions: Bottom heat, Conventional/Traditional cooking, Defrost, Grilling, Light, Moist fan baking, Pizza setting, True fan cooking, Turbo grilling
- Oven cavity with 3 baking levels
- Retractable knobs
- Electronic oven functions overview: Acoustic signal, Duration, Minute minder, Time
- Halogen oven lighting
- Catalytic stayclean oven lining
- Easy to clean door
- Cooling fan

### Technical info

Cut-out dimensions (mm)  
590 (H) x 560 (W) x 550 (D)

Product dimensions (mm)  
594 (H) x 595 (W) x 567 (D)

Price €570



**EOF6H46X2**  
Multifunction Steel  
Rotary Controls, Stainless Steel

**Features**

- Multifunction combines Ultrafan® fan cooking with other cooking functions, meaning you can choose the best setting to suit your cooking needs
- Ultrafan® Cooking
- Fan controlled defrosting
- Turbo grilling - combines grill and fan for a spit roast effect
- Retractable oven controls with LED display
- Smooth enamel interior - easier to clean
- Removable door and glass panes for easy cleaning
- Cool door - with 3 panes of glass for added safety while you cook
- 'A' energy class



**Technical info**

Cut-out dimensions (mm)  
590 (H) x 560 (W) x 550 (D)  
Product dimensions (mm)  
594 (H) x 595 (W) x 567 (D)  
**Price €525**



**KOFGH40TX**  
Multifunction Steel

**Features**

- Multifunction combines Ultrafan® fan cooking with other cooking functions, meaning you can choose the best setting to suit your cooking needs
- Ultrafan® Cooking
- Fan controlled defrosting
- Dual circuit economy variable grill
- Turbo grilling - combines grill and fan for a spit roast effect
- Retractable oven controls with LED display
- Smooth enamel interior - easier to clean
- Removable door and glass panes for easy cleaning
- Cool door - with 2 panes of glass for added safety while you cook
- 'A' energy class



**Technical info**

Cut-out dimensions (mm)  
590 (H) x 560 (W) x 550 (D)  
Product dimensions (mm)  
594 (H) x 595 (W) x 567 (D)  
**Price €465**



**KOFGH40TK**  
Multifunction Black

**Features**

- Multifunction combines Ultrafan® fan cooking with other cooking functions, meaning you can choose the best setting to suit your cooking needs
- Ultrafan® Cooking
- Fan controlled defrosting
- Dual circuit economy variable grill
- Turbo grilling - combines grill and fan for a spit roast effect
- Retractable oven controls with LED display
- Smooth enamel interior - easier to clean
- Removable door and glass panes for easy cleaning
- Cool door - with 2 panes of glass for added safety while you cook
- 'A' energy class



**Technical info**

Cut-out dimensions (mm)  
590 (H) x 560 (W) x 550 (D)  
Product dimensions (mm)  
594 (H) x 595 (W) x 567 (D)  
**Price €465**



**KOHGH40BX**  
Steel,  
Rotary Controls



**Features**

- Multifunction combines Ultrafan® fan cooking with other cooking functions, meaning you can choose the best setting to suit your cooking needs
- Ultrafan® Cooking
- Fan controlled defrosting
- Dual circuit economy variable grill
- Turbo grilling - combines grill and fan for a spit roast effect
- Retractable oven controls with LED display
- Smooth enamel interior - easier to clean
- Removable door and glass panes for easy cleaning
- Cool door - with 2 panes of glass for added safety while you cook
- 'A' energy class



**Technical info**

Cut-out dimensions (mm)  
590 (H) x 560 (W) x 550 (D)  
Product dimensions (mm)  
594 (H) x 595 (W) x 567 (D)  
**Price €415**

## Cooking Single Ovens



### EOM6P46X

Pyro Multifunction Steel  
Rotary Controls, AirFry



#### Features

- Pyrolytic cleaning
- Multifunction combines Ultrafan® fan cooking with other cooking functions, meaning you can choose the best setting to suit your cooking needs
- Ultrafan® Cooking
- Fan controlled defrosting
- Turbo grilling - combines grill and fan for a spit roast effect
- Temperature probe
- Removable door and glass panes for easy cleaning
- Cool door - with 4 glass panes for added safety while you cook
- Child lock for added safety
- 'A' energy class

#### Technical info

Cut-out dimensions (mm)  
590 (H) x 560 (W) x 550 (D)

Product dimensions (mm)  
594 (H) x 595 (W) x 567 (D)

Price €695



### EOM6P46K

Pyro Multifunction Black  
Rotary Controls, AirFry



#### Features

- Pyrolytic cleaning
- Multifunction combines Ultrafan® fan cooking with other cooking functions, meaning you can choose the best setting to suit your cooking needs
- Ultrafan® Cooking
- Fan controlled defrosting
- Turbo grilling - combines grill and fan for a spit roast effect
- Retractable oven controls with LED display
- Removable door and glass panes for easy cleaning
- Cool door - with 4 glass panes for added safety while you cook
- Child lock for added safety
- 'A' energy class

#### Technical info

Cut-out dimensions (mm)  
590 (H) x 560 (W) x 550 (D)

Product dimensions (mm)  
594 (H) x 595 (W) x 567 (D)

Price €695

## Pack Single Oven & Hob



### EPV2000BXA

Single Fan Oven, Minute minder  
Hob 60 cm Built-in Ceramic Hob



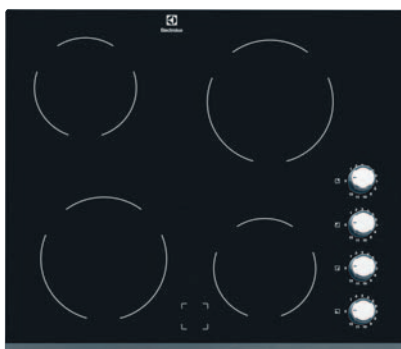
#### KOILHOOBX4 Features

- Anti-fingerprint stainless steel
- AquaClean
- 'A' energy class
- 2 oven shelves
- LED Digital Display
- Removable door and glass panes for easy cleaning
- Oven features:
- Bottom heat
- Isofront® Double Glazed Doors
- Top heat
- Clean 'n' clear enamel interior
- Diamond-glazed Enamel Interior
- Built in Electrical Single oven

#### Technical info

Cut-out dimensions (mm)  
600 (H) x 560 (W) x 550 (D)

Product dimensions (mm)  
590 (H) x 594 (W) x 560 (D)



#### EHF6140FOK Features

- Residual heat indicators
- Side rotary controls
- Rotary controls
- Ceramic surface - easy to clean

#### Technical info

Cut-out dimensions (mm)  
38 (H) x 560 (W) x 490 (D)

Product dimensions (mm)  
590 (H) x 520 (W)

Price €599



## Double Oven for flexible cooking

Our Double Oven gives you real kitchen flexibility. With two separate cavities, you can cook two different dishes at once. Host a dinner party with ease, now you can roast succulent joints and bake indulgent deserts at the same time.

## Cooking Double Ovens



### Technical info

Cut-out dimensions (mm)  
875 (H) x 560 (W) x 550 (D)

Product dimensions (mm)  
888 (H) x 594 (W) x 568 (D)



Stainless Steel Price €1,060    Black Price €1,060

### KDFCC00X KDFCC00K

Multifunction Fan in both ovens  
Catalytic, Touch Controls, Steel or Black

#### Features

- 'A' energy rating in both ovens for optimum efficiency
- Multifunction in both ovens combines Ultrafan® fan cooking with other cooking functions meaning you can choose the best setting to suit your cooking needs
- Ultrafan® Cooking
- Fan controlled defrosting
- Dual circuit economy variable grill
- Turbo grilling - combines grill and fan for a spit roast effect
- Catalytic cleaning - aids oven cleaning and saves you time
- Removable door and glass panes for easy cleaning
- Cool door - with 3 panes of glass for added safety while you cook
- Fan stops when opening bottom oven door
- Child lock for added safety
- Anti-fingerprint Stainless Steel



### Technical info

Cut-out dimensions (mm)  
875 (H) x 560 (W) x 550 (D)

Product dimensions (mm)  
888 (H) x 594 (W) x 568 (D)



Stainless Steel Price €949    Black Price €949

### EDFDC46X EDFDC46K

Multifunction Fan, Catalytic  
Rotary Controls, Steel or Black

#### Features

- Double built-in oven
- Multifunctional oven with ring heating element
- Oven energy class: A
- Bottom oven energy class: A
- Top oven cooking functions: Bottom heat, Conventional/Traditional cooking, Defrost, Grilling, Light, Moist fan baking,
- Pizza setting, True fan cooking, Turbo grilling
- Bottom oven cooking functions: Bottom heat, Conventional/Traditional cooking, Fast grilling, Grilling, Light, Top heat
- Anti fingerprint stainless steel
- Oven cavity with 2 baking levels
- Retractable knobs
- Electronic oven functions overview: Acoustic signal, Duration, Minute minder, Time
- Catalytic stayclean oven lining
- Easy to clean door
- Cooling fan



### KDFGE40TX KDFGE40TK

Built-in Oven 44 / 46Litres  
A Stainless Steel/Also available in Black

#### Features

- 'A' energy rating in both ovens for optimum efficiency
- Ultrafan® Cooking
- Fan controlled defrosting
- Retractable oven controls with LED display
- Smooth enamel interior - easier to clean
- Removable door and glass panes for easy cleaning
- Cool door - with 2 panes of glass for added safety while you cook
- Anti-fingerprint Stainless Steel

#### Technical info

Cut-out dimensions (mm)  
875 (H) x 560 (W) x 550 (D)

Product dimensions (mm)  
888 (H) x 594 (W) x 568 (D)



Stainless Steel Price €785    Black Price €749





## Compact built-in range

Create a beautiful kitchen with a range of matching built-in appliances.

## Microwaves

Create various dishes using a microwave with grill function. Or simply heat up your delicious leftovers.

## Warming drawers

Ensure your delicious dishes are ready for serving with one of our warming drawers. They complement our compact built-in appliances beautifully.

# KKS

Kontinental Kitchen Supplies

## Cooking Combi / Warming Drawers



### EVLBE08X

43 Litre, Multifunction  
Oven & Microwave, Touch Control, Stainless Steel

#### Features

- Multifunction combines Ultrafan® fan cooking with other cooking functions, meaning you can choose the best setting to suit your cooking needs
- Ultrafan® Cooking
- Fan controlled defrosting
- Turbo grilling - combines grill and fan for a spit roast effect
- Smooth enamel interior - easier to clean
- Removable door and glass panes for easy cleaning
- Cool door - with 3 panes of glass for added safety while you cook
- Child lock for added safety



#### Technical info

Cut-out dimensions (mm)  
450 (H) x 560 (W) x 550 (D)

Product dimensions (mm)  
455 (H) x 595 (W) x 567 (D)

Price €1,045



### EVLDE46X

43 Litre, Multifunction  
Oven & Microwave, Rotary Control, Stainless Steel

#### Features

- Multifunction combines Ultrafan® fan cooking with other cooking functions, meaning you can choose the best setting to suit your cooking needs
- Ultrafan® Cooking
- Fan controlled defrosting
- Turbo grilling - combines grill and fan for a spit roast effect
- Smooth enamel interior - easier to clean
- Removable door and glass panes for easy cleaning
- Cool door - with 3 panes of glass for added safety while you cook
- Child lock for added safety



#### Technical info

Cut-out dimensions (mm)  
450 (H) x 560 (W) x 550 (D)

Product dimensions (mm)  
455 (H) x 595 (W) x 567 (D)

Price €965



### EVLDE46K

43 Litre, Multifunction  
Oven & Microwave, Rotary Control, Black

#### Features

- Multifunction combines Ultrafan® fan cooking with other cooking functions, meaning you can choose the best setting to suit your cooking needs
- Ultrafan® Cooking
- Fan controlled defrosting
- Turbo grilling - combines grill and fan for a spit roast effect
- Smooth enamel interior - easier to clean
- Removable door and glass panes for easy cleaning
- Cool door - with 3 panes of glass for added safety while you cook
- Child lock for added safety

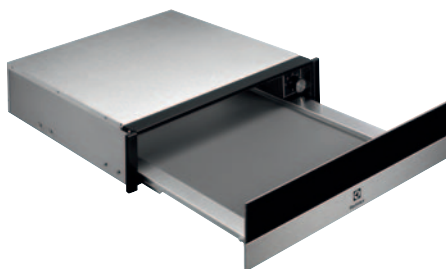


#### Technical info

Cut-out dimensions (mm)  
450 (H) x 560 (W) x 550 (D)

Product dimensions (mm)  
455 (H) x 595 (W) x 567 (D)

Price €965



### EBD4X

14cm Steel Warm Drawer

#### Features

- Anti fingerprint stainless steel
- 2 heat settings
- On/off switch with LED lamp
- Anti-slip mat
- Adjustable thermostat rotary control
- Crockery warming
- Defrost
- Food Warming
- Proving Dough

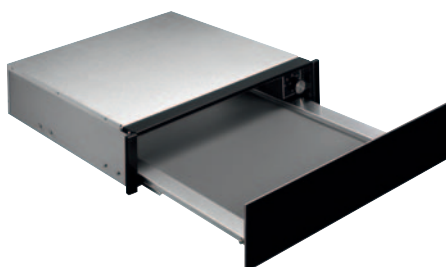


#### Technical info

Cut-out dimensions (mm)  
140 (H) x 560 (W) x 550 (D)

Product dimensions (mm)  
140 (H) x 594 (W) x 535 (D)

Price €519



### LBD4Z

900 Warming Drawer Built\_In Pure Black

#### Features

- Load capacity for max. 6 persons servings, depending on the size of the dishes
- Warming drawer functions: Crockery warming, Defrost, Food Warming, Proving Dough
- Adjustable temperatures: 30-80°C
- Warm air circulation system



#### Technical info

Cut-out dimensions (mm)  
140 (H) x 560 (W) x 550 (D)

Product dimensions (mm)  
140 (H) x 594 (W) x 535 (D)

Price €519



**KMFD264TEX**

Built-in Microwave  
Black/Stainless steel with antifingerprint

**Features**

- 800 W quartz grill
- Stainless steel interior
- 24-hour digital clock with auto timer
- Fast programming
- Grill cooking
- Fast, efficient microwave cooking
- Auto weight defrosting programmes
- Crunch pizza function
- Quartz grill
- 26 litre capacity
- Audible cooking end signal
- Rectangular grill rack
- Finger print proof stainless steel
- Combi microwave oven and grill



**Technical info**

Cut-out dimensions (mm)  
450 (H) x 562 (W) x 500 (D)  
Product dimensions (mm)  
459 (H) x 594 (W) x 404 (D)  
**Price €595**



**KMFE172TEX**

Built-in Microwave  
Black/Stainless steel with antifingerprint

**Features**

- Active' display provides cooking guidance through animation and allows cooking adjustments without interrupting the programme, making cooking easier
- Microwave power: 800 Watt, 5 levels
- Audible cooking end signal
- Child lock - for safety
- 17 litre capacity



**Technical info**

Cut-out dimensions (mm)  
360 (H) x 562 (W) x 300 (D)  
Product dimensions (mm)  
371 (H) x 594 (W) x 316 (D)  
**Price €540**



**KMSE173MMX**

17 Litre , 300mm deep  
Suitable for wall unit, Stainless steel

**Features**

- 800 W quartz grill
- Stainless steel interior
- 24-hour digital clock with auto timer
- Fast programming
- Grill cooking
- Fast, efficient microwave cooking
- Auto weight defrosting programmes
- Crunch pizza function
- Quartz grill
- 26 litre capacity
- Audible cooking end signal
- Rectangular grill rack
- Finger print proof stainless steel
- Combi microwave oven and grill



**Technical info**

Cut-out dimensions (mm)  
450 (H) x 562 (W) x 500 (D)  
Product dimensions (mm)  
459 (H) x 594 (W) x 404 (D)  
**Price €385**



**KMSD253MMX**

25 Litre, 900w, 1000W grill  
Stainless steel

**Features**

- Active' display provides cooking guidance through animation and allows cooking adjustments without interrupting the programme, making cooking easier
- Microwave power: 800 Watt, 5 levels
- Audible cooking end signal
- Child lock - for safety
- 17 litre capacity



**Technical info**

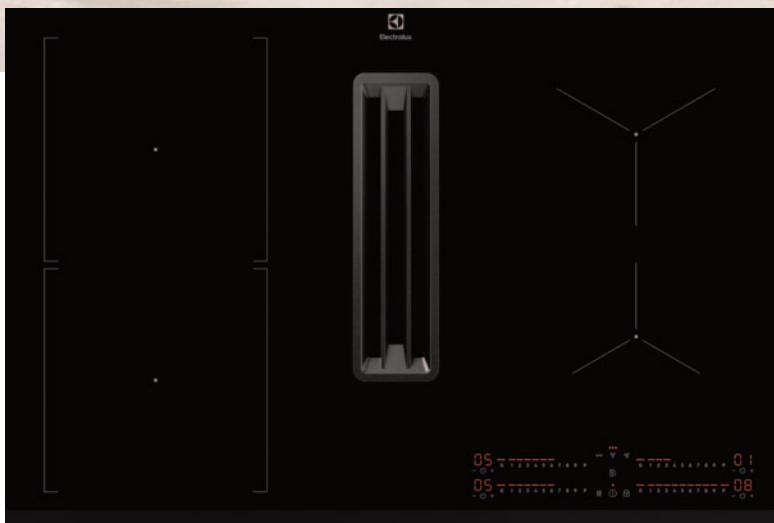
Cut-out dimensions (mm)  
360 (H) x 562 (W) x 300 (D)  
Product dimensions (mm)  
371 (H) x 594 (W) x 316 (D)  
**Price €530**



## Induction Hobs

Induction technology means that heat is delivered quickly, so water boils faster than ever and to precisely the right spot, meaning the surrounding areas remain cool and safe. It also reacts instantly to temperature changes, responding instantly when you lower the heat, giving you total control. And the smooth surface makes it easy to clean.

# Cooking Hobs



## LCC83443

600 Bridge with Extractor 80 cm  
Induction ExtractorHob ComboHob

### Features

- Child safety lock function
- Indicator for grease filter saturation
- Indicator for carbon filter saturation
- A+



### Technical info

Cut-out dimensions (mm)  
205(H) x 750 (W) x 490 (D)

Product dimensions (mm)  
780 (W) x 520 (D)

Price €2,529

### Product Benefits

#### Kitchen planning freedom and flexibility

The 600 Bridge with eXtractor Hob is an induction hob with a powerful built-in extractor for greater kitchen planning freedom. And the Bridge function can combine 2 cooking zones into one large zone for cookware like planchas.

#### 4 Individual Zone Controls for greater command when you cook

Easily command 4 different cooking zones and set separate timers for each with 4 Individual Zone Controls. Each zone has 9 power levels, with other functions including power boost, active touch, child lock and hob2Hood control.

#### Merge zones for more room with the Bridge function

The Bridge function lets you combine two separate cooking zones to create a single large surface. With the temperature and time settings automatically aligned, it's ideal for making the most of planchas or roasting pots.

#### The 2-in-1 Filter for fresher kitchen air

The 2-in-1 Filter includes both a charcoal and grease filter to help keep kitchen air fresh. The removable filter can be easily cleaned in the dishwasher and regenerated in the oven for prolonged use.

#### The extractor adjusts automatically with auto mode

Keep your mind on your cooking with an extractor that adjusts automatically as you raise or lower the power level. Auto mode extraction technology enables you to focus on your food while your hob and extractor seamlessly work for you.

#### Clean kitchen air quickly with the Boost function

Simply press the Boost function on the extractor for instant powerful extraction. It's activated for 10 min and efficiently cleans kitchen air from excess fumes and steam.



**EIV84550**  
80cm Induction Hob 5 Zones

### Features

- Bevelled sides for a sleek flush finish in the kitchen
- Auto heat up function
- Individual timers
- Child safety control lock
- Auto safety switch off
- Touch controls
- Hob2Hood® function



### Technical info

Cut-out dimensions (mm)  
750 (W) x 490 (D)  
Product dimensions (mm)  
780 (W) x 520 (D)

Price €899



**KIV834**  
80cm Induction Bridge Hob 4 Zones

### Features

- Bevelled sides for a sleek flush finish in the kitchen
- Auto heat up function
- Individual timers
- Child safety control lock
- Auto safety switch off
- Touch controls
- Hob2Hood® function
- Bridge function



### Technical info

Cut-out dimensions (mm)  
750 (W) x 490 (D)  
Product dimensions (mm)  
780 (W) x 520 (D)

Price €779



**LIT81443**  
80cm 4 ring Base Induction

### Features

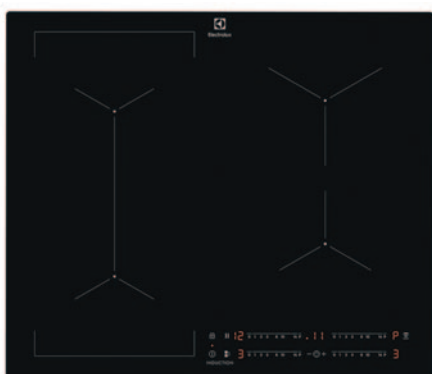
- Bevelled sides for a sleek flush finish in the kitchen
- Auto heat up function
- Individual timers
- Child safety control lock
- Touch controls
- DoubleBridge function
- PowerBoost function



### Technical info

Cut-out dimensions (mm)  
750 (W) x 490 (D)  
Product dimensions (mm)  
780 (W) x 520 (D)

Price €699



**KIV644**  
60cm MultipleBridge Induction Hob 4 Zones

### Features

- Bevelled sides for a sleek flush finish in the kitchen
- Auto heat up function
- Individual timers
- Child safety control lock
- Touch controls
- DoubleBridge function
- PowerBoost function



### Technical info

Cut-out dimensions (mm)  
560 (W) x 490 (D)  
Product dimensions (mm)  
590 (W) x 520 (D)

Price €649



### LIT6043

60cm Induction Hob 4 Zones with Hob2Hood

#### Features

- Bevelled sides for a sleek flush finish in the kitchen
- Auto heat up function
- Individual timers
- Child safety control lock
- Auto safety switch off
- Touch controls
- Hob2Hood® function
- PowerBoost function



#### Technical info

Cut-out dimensions (mm)  
44 (H) x 560 (W) x 490 (D)

Product dimensions (mm)  
590 (W) x 520 (D)

Price €469



### LIB60420C

60cm 4 Zone Induction



#### Features

- Bevelled sides for a sleek flush finish in the kitchen
- Auto heat up function
- Individual timers
- Child safety control lock
- Auto safety switch off
- Touch controls
- Hob2Hood® function

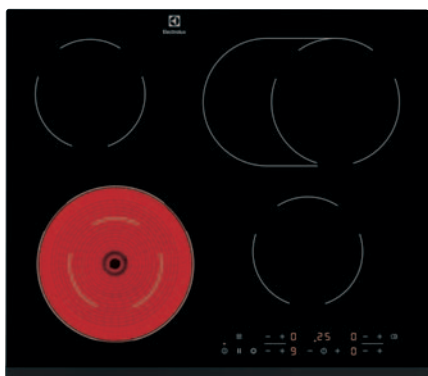


#### Technical info

Cut-out dimensions (mm)  
750 (W) x 490 (D)

Product dimensions (mm)  
780 (W) x 520 (D)

Price €425



### LRR6436

60cm Touch Control Ceramic Hob  
4 Zones Radiant Hob



#### Features

- Bevelled sides for a sleek flush finish in the kitchen
- Stop & Go function - great for unexpected interruptions
- Auto heat up function
- Residual Heat Indicators
- Child safety control lock
- Ceramic surface - easy to clean



#### Technical info

Cut-out dimensions (mm)  
38 (D) x 560 (W) x 490 (D)

Product dimensions (mm)  
590 (W) x 520 (D)

Price €355



### EHF6241FOK

60cm Touch Control Ceramic Hob 4 Zones

#### Features

- Bevelled sides for a sleek flush finish in the kitchen
- Residual heat indicators
- Child safety control lock
- Auto safety switch off
- Ceramic surface - easy to clean

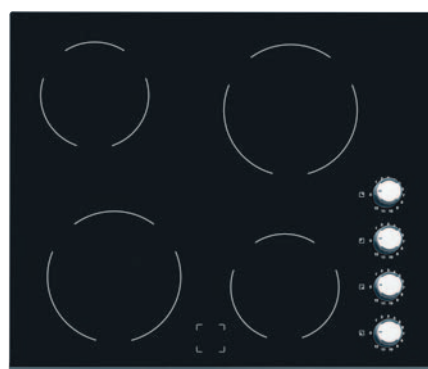


#### Technical info

Cut-out dimensions (mm)  
560 (W) x 490 (D)

Product dimensions (mm)  
590 (W) x 520 (D)

Price €339



### EHF6140ISK

60cm Built-in Ceramic Hob Control Knobs

#### Features

- Residual heat indicators
- Side rotary controls
- Rotary controls
- Ceramic surface - easy to clean



#### Technical info

Cut-out dimensions (mm)  
560 (W) x 490 (D)

Product dimensions (mm)  
590 (W) x 520 (D)

Price €285



## **Ceramic Hobs**

**The versatility to install your  
hob anywhere you want to**

Because this hob is independent, you have way more flexibility to install it wherever you want to. Choose the location that suits your cooking style.

## **Gas Hobs**

**Finely-tuned flame**

Take control of your hob with our responsive gas taps. They enable you to easily adjust the level of the flame so that you can always cook over the right heat.

# **KKS**

**Kontinental** Kitchen Supplies





**KGS7536X**

75cm Built-in Gas Hob



**Features**

- Automatic integrated ignition
- Easy to reach front rotary controls 75cm gas hob with 20% more space still fits into a 60cm cut out
- Safety gas cut off using thermocouples
- 3 stylish cast iron pan supports
- Stylishly one-piece hob surface for easy cleaning
- New flat design
- 2 Semi Rapid Burner
- 1 Multi Crown Burner
- 1 Rapid Burner
- 1 Auxiliary Burner

**Technical info**

Cut-out dimensions (mm)

560 (W) x 480 (D)

Product dimensions (mm)

744 (W) x 510 (D)

Price €475



**KGS6436BX**

60cm Built-in Gas Hob



**Features**

- Automatic integrated ignition
- Easy to reach front rotary controls
- Safety gas cut off using thermocouples
- 2 stylish cast iron pan supports
- Stylish one-piece hob surface for easy cleaning
- New flat design
- 2 Semi Rapid Burner
- 1 Multi Crown Burner
- 1 Auxiliary Burner

**Technical info**

Cut-out dimensions (mm)

560 (W) x 480 (D)

Product dimensions (mm)

595 (W) x 510 (D)

Price €355

## Cooling Built-in Refrigerators and Freezers



### **Built-in Refrigerator**

Pack in an entire week's shopping in a spacious, statement fridge.

### **Consistently cool, with DynamicAir**

DynamicAir makes sure that the environment inside your fridge is kept at a stable temperature. It works by circulating cool air throughout, meaning that even when the door is opened, your food is protected from heating up.

### **Built-in Freezer**

Organise your frozen produce and easily find what you need, and never defrost again with our frost-free model.

### **NoFrost, forever**

Our NoFrost technology prevents ice from building up in the freezer, so you never have to defrost it again. Making it more hygienic and easier to clean, while giving you extra room to store the ingredients that you love.

# **KKS**

**Kontinental** Kitchen Supplies



### LRB2DE18C

600 LRB2DE18C Built-in Refrigerator FanHigh



#### Features

- 1 full width covered dairy compartment
- Removeable egg tray
- Large capacity fresh food storage space
- Child-proof control panel protection
- Fixed Door on Door Fittings
- 314 litre gross fridge capacity
- Holiday Mode
- Visible external digital temperature indicator
- Electronic temperature controls with digital LED display
- CFC & HFC-free and environmentally friendly
- Built in refrigerator
- Drawers : 2, Half width transparent plastic
- Automatic evaporator
- Open Door Signal
- Coolmatic
- Reversible Door
- Bottle shelf with holder
- Climate class: SN-N-ST
- Auto Fridge Defrost
- Egg trays: 1 for 6 eggs
- Consistently cool, with DynamicAir
- Make room for tall items with FlexiShelf
- Smooth, quite, soft closing door
- Fully extendable drawer. For effortless access

#### Technical info

Built in dimensions (mm)  
1780 (H) x 560 (W) x 550 (D)

Product dimensions (mm)  
1769 (H) x 556 (W) x 549 (D)

Price €926



### LUT6NE18C

Frost Free Built-in Upright Freezer



#### Features

- For fully integrated, door-on-door installation
- 216 litres gross capacity
- Electronic touch controls with digital indications
- Frost-free technology
- FrostFree freezer with automatic defrosting
- Door hinges placement: Right & Reversible
- Freezer drawers: 5 Full Width, Transparent Plastic
- Freezer flap(s): 2, Transparent Plastic
- Fast Freeze function with auto return to normal settings
- Audible and visual warning signal for high temperature
- Audible and visual warning signal for open door
- Fast freeze function with automatic return to normal
- 4 star freezer
- Noise level: only 39 dB
- Other internal features: 2 Accumulators
- Freezer colour/design: White
- 1780 mm built-in height

#### Technical info

Built in dimensions (mm)  
1780 (H) x 560 (W) x 550 (D)

Product dimensions (mm)  
1769 (H) x 556 (W) x 549 (D)

Price €1,050

## Cooling Built-in Fridge Freezers



### Frost Free Built-in Fridge Freezer

TwinTech® No Frost fridge-freezer protects food quality. Intelligent technology with two independent cooling systems and No Frost freezer.

Superior No Frost systems, humidity is kept ideal in the fridge, preventing food from drying out. 60% less mass loss, with TwinTech® No Frost.

### Low Frost Built-in Fridge Freezer

40% faster cool down with ColdSense. Fridge and room temperature sensors react quickly to environment changes, maintaining a stable temperature. A fast cool down is secured and the right temperature is quickly adjusted. Less temperature shocks, protecting the textures in each delicious fruit.

# KKS

Kontinental Kitchen Supplies



## LNTNE18S1

70:30 Frost Free Built-in Fridge Freezer 177.2 cm F



### Features

- Fridge capacity (gross): 196 litres
- Freezer capacity (gross): 76 litres
- Frost free
- Automatic defrost in fridge
- Adjustable temperature control
- Intensive cooling with auto switch off - for fast chilling of fresh food
- 1 half width sliding door shelf
- 3 full width door shelves including bottle shelf
- 1 full width covered dairy compartment
- Flexi shelf
- Child proof control panel
- Reversible door hinge
- Premium LED fridge lighting

### Technical info

**Built in dimensions (mm)**  
1780 (H) x 560 (W) x 550 (D)

**Product dimensions (mm)**  
1772 (H) x 548 (W) x 549 (D)

**Price €915**



## LNS5LE185

50:50 Static Low Frost Built-in Fridge Freezer 177.2 cm F



### Features

- Fridge capacity (gross): 163 litres
- Freezer capacity (gross): 106 litres
- Automatic defrost in fridge
- Adjustable temperature control
- 1 half width sliding door shelf
- 2 full width door shelves including bottle shelf
- 1 full width covered dairy compartment
- 4 star freezer
- 3 freezer shelves
- Reversible door hinge

### Technical info

**Built in dimensions (mm)**  
1780 (H) x 560 (W) x 550 (D)

**Product dimensions (mm)**  
1772 (H) x 548 (W) x 549 (D)

**Price €715**



## LNS5LE18S

70:30 Static Low Frost Built-in Fridge Freezer 177.2 cm F



### Features

- Fridge capacity (gross): 199 litres
- Freezer capacity (gross): 73 litres
- Automatic defrost in fridge
- Adjustable temperature control
- 3 full width door shelves including bottle shelf
- 1 full width covered dairy compartment
- 4 star freezer
- 3 freezer drawers
- Reversible door hinge

### Technical info

**Built in dimensions (mm)**  
1780 (H) x 560 (W) x 550 (D)

**Product dimensions (mm)**  
1772 (H) x 548 (W) x 549 (D)

**Price €715**

## Cooling Built-in Undercounter Refrigerator and Freezer



### Undercounter Integrated Freezer

No Frost technology prevents ice from building up in the freezer, so you never have to defrost it again. Making it more hygienic and easier to clean, while giving you extra room to store the ingredients that you love.

### Undercounter Integrated Refrigerator

The 300 OptiSpace Refrigerator offers a spacious interior for groceries. Storage options make finding a spot for larger items simple. And if you need even more room, the drawers can be easily removed.

# KKS

**Kontinental** Kitchen Supplies



**LYB3NE82R**

Frost Free Built-in Upright Freezer 81.5 cm E



**Features**

- 86 litres gross capacity
- Frost-free technology
- 4 star freezer
- Fast freeze function with automatic reset
- Visible and acoustic high temperature alarm
- 3 large capacity freezer drawers
- Transparent freezer drawers
- Reversible door

**Technical info**

Built in dimensions (mm)  
820 (H) x 600 (W) x 550 (D)

Product dimensions (mm)  
815 (H) x 596 (W) x 550 (D)

Price €715



**LXB3AE82R**

Built-in Refrigerator 81.9 cm E



**Features**

- 136 litre gross fridge capacity
- Auto fridge defrost
- 2 full and 2 half depth glass shelves
- 1 full width covered dairy compartment
- Bottle shelf with holder
- LED Bulb
- 1 extra large salad drawer
- Reversible door

**Technical info**

Built in dimensions (mm)  
820 (H) x 600 (W) x 550 (D)

Product dimensions (mm)  
819 (H) x 596 (W) x 547 (D)

Price €595

## Cooling Free Standing Fridge Freezer



### LNT5ME32W1

600 Fridge Freezer NoFrost White



#### Features

- TwinTech No Frost: Protects produce, prevents ice build-up
- Prevent dry or accidentally frozen food with Multiflow
- Effortless control with Touch Electronic Controls
- Net capacity freezing compartment: 94 l
- Net capacity refrigeration compartment: 230 l
- Noise level: only 42 dB
- Automatic defrosting of the freezer compartment
- Fast freeze function
- Automatic defrosting of the cooling compartment
- Shopping function quickly assures the desired refrigeration temperature
- Refrigerator lighting: Top Panel. LED
- Refrigerator shelves: 2 Full Width, White Plastic
- Egg tray: 2 for 8 eggs
- Freezer drawers: 2 Full Width + 1 Half Depth, Transparent Plastic
- Refrigerator drawers: 1 Full Width, 1 Pull Out Drawer
- Door hinges placement: Right & Reversible
- Appliance feet: adjustable
- Fridge freezer colour/design: White

#### Technical info

Product dimensions (mm)  
1860 (H) x 595 (W) x 650 (D)

Price €695



### LNT6ME32U2

600 Fridge Freezer NoFrost Steel



#### Features

- TwinTech No Frost: Protects produce, prevents ice build-up
- Prevent dry or accidentally frozen food with Multiflow
- Effortless control with Touch Electronic Controls
- Climate class: N-ST-T
- Keeps food juicy and hydrated. The 600 Twin Tech® No Frost Fridge Freezer, keeps food juicy and hydrated. Its dual cooling system maintains the ideal humidity and keeps food from drying out. It also ensures you never have to defrost the freezer.
- Adjustable feet at front for uneven floor conditions; wheels at rear
- Refrigerator shelves for storage : 2 Full Width
- Auto defrost fridge and freezer
- Open Door Signal
- Coolmatic
- Refrigerator drawers : 1, 2, Half width transparent plastic
- Dynamic Air Recirculation
- Freestanding fridge-freezer
- A+ energy rating
- Fast freeze in 24 hours: 7 kg
- Removable egg tray
- Adjustable feet at front for uneven floor conditions
- Reversible Door Hinge
- CFC & HFC-free and environmentally friendly
- Freezer capacity (gross): 104 litres

#### Technical info

Product dimensions (mm)  
1860 (H) x 595 (W) x 650 (D)

Price €770

## Cooling Free Standing Fridge



### LRS3DE39W

Free Standing Fridge White



#### Features

- Net capacity cooling compartment: 396 l
- Very silent: only 40 dB
- Automatic defrosting of the cooling compartment
- Shopping function quickly assures the desired refrigeration temperature
- Electronic temperature control with LED indications
- Refrigerator shelves: 5 Full Width, White Plastic
- Egg tray: 2 for 8 eggs
- Refrigerator drawer(s): 1 Full Width
- Refrigerator lighting: 1 Top LED
- Refrigerator colour/design: White
- Door hinges placement: Right & Reversible
- Appliance feet: Adjustable feet, Rear fixed rollers
- Fan air circulation for even temperature throughout the fridge

#### Technical info

Product dimensions (mm)  
1860 (H) x 595 (W) x 650 (D)

Price €829





**LRS3DE39X**

Free Standing Fridge Steel



**Features**

- 396 litre gross fridge capacity
- Auto Fridge Defrost
- Intensive cooling with auto switch off - for fast chilling of fresh food
- Bottle shelf with holder
- 1 extra large salad drawer
- **Stable temperature, always cool**  
DynamicAir Technology creates an airflow, moving cool air around the fridge, so there's al

ways a stable temperature in every corner. Preventing ingredients from losing shape or drying out.

- **Consistently cool, with DynamicAir**  
DynamicAir makes sure that the environment inside your fridge is kept at a stable temperature. It works by circulating cool air throughout, meaning that even when the door is opened, your food is

protected from heating up.

- **OptiSpace has a roomy interior for groceries**  
Our Refrigerator with OptiSpace offers plenty of storage options both on top and in between shelves. And if you need even more room, the drawers can be easily removed to suit your specific needs.

**Technical info**

Product dimensions (mm)  
1860 (H) x 595 (W) x 650 (D)

Price €829



**LUT6NE28W**

Free Standing No Frost Freezer White



**Features**

- 307 litres gross capacity
- Frost-free Technology
- 4 Star Freezer
- 5 large capacity freezer drawers
- A++ energy rating
- **No Frost, forever**  
600 No Frost technology prevents ice from building up in the freezer, so you never have to defrost it again. Making it more

hygienic and easier to clean, while giving you extra room to store the ingredients that you love.

- **Choose freezer settings with the Electronic Controls**  
Electronic Controls give you the ability to adjust the settings and internal temperature of the freezer.

- **Maintain perfect texture with FastFreeze**  
The FastFreeze system freezes fresh foods quickly so that vitamins, textures, flavours, and all healthy qualities are better preserved.

**Technical info**

Product dimensions (mm)  
1860 (H) x 595 (W) x 650 (D)

Price €865

Cooling Free Standing Freezer



**LUT6NE28X**

600 Upright Freezer NoFrost, Free Standing, Steel



**Features**

- **No Frost, forever**  
600 No Frost technology prevents ice from building up in the freezer, so you never have to defrost it again. Making it more hygienic and easier to clean, while giving you extra room to store the ingredients that you love.
- **Choose freezer settings with the Electronic Controls**  
Electronic Controls give you the ability to adjust the settings and internal temperature of the freezer.

- **No Frost keeps your freezer ice free**  
With the No Frost technology, there's no need to defrost the freezer. It prevents the build-up of ice, so you can always be sure of maximum performance.
- **Easy access with quick door opening**  
The quick-opening door smoothly pushes outwards when the handle's pressed inwards. Reduce the usual vacuum and reduce pulling of the fridge door. Avoiding

sticking and providing instant access.

- **Maintain perfect texture with FastFreeze**  
The FastFreeze system freezes fresh foods quickly so that vitamins, textures, flavours, and all healthy qualities are better preserved.
- 307 litres gross capacity
- Frost-free Technology
- 4 Star Freezer
- 5 large capacity freezer drawers
- A++ energy rating

**Technical info**

Product dimensions (mm)  
1860 (H) x 595 (W) x 650 (D)

Price €865

A top-down view of several ceramic plates. Two large green plates with intricate white leaf vein patterns are the main focus. A smaller pink plate is partially visible behind them. The background is a light-colored, textured surface.

## Cleaning Fully Integrated Dishwashers

### Easy installation, PerfectFit

With PerfectFit Sliding Hinges, it's never been easier to install your new dishwasher. The hinges accommodate all niche machine heights and even remove the need to cut the plinth. You can be confident that your machine will fit into your kitchen perfectly.

### Three-times better drying with AirDry

The new AirDry technology uses natural airflow to finish drying, for up to three-times better performance compared to closed-door systems. The door opens 10cm towards the end of the cycle, letting air circulate for superb drying results.

# KKS

Kontinental Kitchen Supplies



## EES48410L

600 SatelliteClean FI with AirDry Technology 14

### Features

- SatelliteClean® Dishes come out spotless with SatelliteClean®—it performs up to 3x better than the standard dishwasher. Thanks to the double-rotating arm that continuously changes the angle of the spray, even bulky items are deeply cleaned.
- Energy efficiency (2010/30/EC): C
- Loading capacity: 14 IEC settings
- 8 programmes, 3 temperatures
- Dishwasher programmes: 160 Minutes, 60 Minutes, 90 Minutes, AUTO Sense, Eco, Machine Care, Quick 30 Minutes, Rinse & Hold
- FlexiSpray Satellite spray arm
- Touch control for programs and functions selection
- Thermo Efficient System
- Warm water connection up to 60°C
- Delay start option from 1 to 24 hours
- Remaining time indication
- Water sensor detects the level of dirt and adjusts water consumption
- Indications for salt and rinse aid
- Beam on Floor with two colours
- Upper basket with FlexiLift
- Height adjustable upper basket, even when fully loaded
- Waterstop System



### Technical info

**Built in dimensions (mm)**  
H(min/max)xWxD (mm): 820/900 x 600 x 550

**Product dimensions (mm)**  
818 (H) x 596 (W) x 550 (D)

**Price €745**



## EES47410L

600 SatelliteClean FI with AirDry Technology 13

### Features

- SatelliteClean® Dishes come out spotless with SatelliteClean®—it performs up to 3x better than the standard dishwasher. Thanks to the double-rotating arm that continuously changes the angle of the spray, even bulky items are deeply cleaned.
- Energy efficiency (2010/30/EC): C
- Loading capacity: 13 IEC settings
- 8 programmes, 3 temperatures
- Dishwasher programmes: 160 Minutes, 60 Minutes, 90 Minutes, AUTO Sense, Eco, Machine Care, Quick 30 Minutes, Rinse & Hold
- FlexiSpray Satellite spray arm
- Touch control for programs and functions selection
- Auto Off function
- Thermo Efficient System
- Warm water connection up to 60°C
- Delay start option from 1 to 24 hours
- Remaining time indication
- Water sensor detects the level of dirt and adjusts water consumption
- Indications for salt and rinse aid
- Beam on Floor with two colours
- Upper basket with FlexiLift
- Height adjustable upper basket, even when fully loaded
- Cutlery basket
- Waterstop System



### Technical info

**Built in dimensions (mm)**  
H(min/max)xWxD (mm): 820/900 x 600 x 550

**Product dimensions (mm)**  
818 (H) x 596 (W) x 550 (D)

**Price €655**



## KEAF7200L

AirDry Technology Full Width 60cm 13 settings E

### Features

- Height adjustable upper basket
- 3 hours delay start
- 5 programmes - 160 Minutes - 90 Minutes - Eco - Quick 30 Minutes - Rinse & Hold
- 9.9 litres - more economical than washing by hand



### Technical info

**Built in dimensions (mm)**  
820-900 (H) x 600 (W) x 570 (D)

**Product dimensions (mm)**  
818 (H) x 596 (W) x 550 (D)

**Price €465**

## Cleaning Fully Integrated Dishwashers



### KEAF72100L

300 AirDry KEAF72100L Fully Integrated Dishwasher with AirDry Technology 9 Settings



#### Features

- A class cleaning performance
  - A class drying performance
  - Symbols indicating progress
  - Dual Spray Arms
  - AirDry technology
  - Delay Start
  - Capacity: 9 Place Settings
  - Foldable cup shelves
  - Height adjustable upper basket
  - Eco energy saving 55°C wash
  - Salt & rinse aid indicators
  - Multi-tab
  - Height Adjustable Upper Basket
  - Audible Alarm
  - A+ class energy efficiency
  - Rinse and hold
  - 49 dB(A) noise level
  - Rinse and hold – pre-washing for freshness
- If it takes you a few days to fill up the dishwasher, the rinse and hold programme will prevent the build-up of odours in the meantime. Water jets remove food remnants from plates and glassware, making sure the kitchen stays fresh.

#### Technical info

Product dimensions (mm)  
818 (H) x 446 (W) x 550 (D)

Price €615

## Cleaning Free Standing Dishwashers



### ESA17210SW White

300 AirDry ESA17210SW Freestanding Dishwasher with AirDry Technology 13 Settings



#### Features

- AirDry Technology
- 3 Hours Delay Start
- Capacity: 13 Place Settings
- Height Adjustable Upper Basket
- 5 programmes, 3 temperatures

#### Technical info

Product dimensions (mm)  
850 (H) x 600 (W) x 625 (D)

Price €530



### ESA17210SX Steel

300 AirDry ESA17210SX Freestanding Dishwasher with AirDry Technology 13 Settings



#### Features

- A class cleaning performance
- A class drying performance
- AirDry technology
- Delay Start
- Capacity: 13 Place Settings
- Foldable cup shelves
- Height adjustable upper basket
- Eco energy saving 55°C wash
- Freestanding
- Salt & rinse aid indicators
- Auto half load
- Energy efficiency recommended
- Multi-tab
- Height Adjustable Upper Basket
- A class energy efficiency
- Rinse and hold
- 48 dB(A) noise level

#### Technical info

Product dimensions (mm)  
850 (H) x 600 (W) x 625 (D)

Price €566



## **Smoother results with SteamCare**

Our SteamCare System ends each wash with steam to reduce wrinkles by a third. Achieving a smooth finish without the heat of regular ironing.

## **Enjoy a peaceful home with our quiet washer dryer**

Washer dryers from Electrolux are designed to perform quietly. This means that you can run a cycle while maintaining a calm and comfortable environment.

## Laundry Integrated Washing Machine



### EF7742OBI

PerfectCare 700 EF7742OBI Front Loading  
Full Size 7 kg rpm

#### Features

- Aqualux washing technology - traditional washing for good results with all fabric types
- Maximum spin speed: 1400 rpm
- Spin reduction option - your choice of 500/700/900/1400 rpm
- Fully integrated design - appliance blends into kitchen design behind cabinet door
- Water connection - cold fill
- B class spin drying performance
- TimeManager® lets you shorten a cycle when you're short on time
- FreshScent programme
- Noise level, dB(A) 69



#### Technical info

Product dimensions (mm)  
819 (H) x 596 (W) x 540 (D)

Price €825

## Laundry Integrated Washer Dryer



### EWD746PCBI

PerfectCare 700 7/4.0 kg 1600 rpm

#### Features

- Washing capacity: 7 kg
- Max. spin speed: 1600 rpm
- Condense dryer: the moisture is condensed into a water container, no air evacuation needed
- Drying capacity: 4.0 kg
- Washer-dryer for fully integrated installation
- Wool program that allows 'wool' labelled items to be washed by machine
- Automatic drying
- Drying by time
- Anti-foam rinse system
- Programs: Eco 40-60, Cottons, Synthetics, Delicates, Hygiene, Steam, Spin/Drain, Rinse, Machine Clean, MixCare 69min, Sport Wear, Outdoor, Wool, Quick 20 Wash&Dry 60
- Child lock
- Anti-flood protection
- Feet: 4 adj feet



#### Technical info

Product dimensions (mm)  
819 (H) x 596 (W) x 540 (D)

Price €957

## Laundry Free Standing Washer Dryer



### EWDK5846B

500 Series 8/4.0 kg 1600 rpm



#### Features

- Freestanding washer-dryer combination
- Washing capacity: 8 kg
- Max. spin speed: 1600 rpm
- Condense dryer: the moisture is condensed into a water container, no air evacuation needed
- Drying capacity: 4.0 kg
- Silk program designed specifically for silk with gentle wash and adapted spin cycle
- Wool program that allows 'wool' labelled items to be washed by machine
- Automatic drying
- Anti-foam rinse system
- Programs: Eco 40-60, Cottons, Synthetics, Delicates, Wool, Silk, Spin/Drain, Rinse, Duvet, Wool Dry, Synthetic Drying, Cotton Drying, Steam, 60Min, Wash&Dry
- Inverter motor for increased performance and extremely silent working
- Child lock
- Anti-flood protection
- Feet: 4 adjustable feet



#### Technical info

Product dimensions (mm)  
847 (H) x 597 (W) x 534 (D)

Price €820

## Laundry Free Standing Washing Machine



### EFI61141B

Sensicare 600 Long, 10kg, 1400rpm, A



#### Features

- Maximum spin speed: 1400 rpm
- Washing capacity: 10 kg
- Silk program designed specifically for silk with gentle wash and adapted spin cycle
- Washing programs: Cottons, Synthetics, Delicates, Wool,

- Rapid 20 Min, Rinse, Spin/Drain, Jeans, Sport, Silk, Duvet, Outdoor, Hygiene, Eco 40-60
- Anti-foam rinse system
- Child lock
- Feet: 4 adjustable feet
- Anti-flood protection

#### Technical info

Product dimensions (mm)  
847 (H) x 597 (W) x 636 (D)

Price €680



### EFI61841B

Sensicare 600 Short 8kg, 1400rpm, A



#### Features

- Maximum spin speed: 1400 rpm
- Washing capacity: 8 kg
- Silk program designed specifically for silk with gentle wash and adapted spin cycle
- Washing programs: Cottons, Synthetics, Delicates, Wool,

- Rapid 14Min, Rinse, Spin/Drain, Jeans, Sport, Silk, Duvet, Outdoor, Hygiene, Eco 40-60
- Anti-foam rinse system
- Child lock
- Feet: 4 adjustable feet
- Anti-flood protection

#### Technical info

Product dimensions (mm)  
847 (H) x 596 (W) x 547 (D)

Price €556

## Laundry Free Standing Dryer



### EDHI618WD

600 GentleCare, 8kg Heat Pump, Porthole, A++



#### Features

- Heat pump technology achieves unprecedented energy efficiency
- Sensor dryer: the dryer senses when the clothes are dried to the level specified
- Additional time controlled drying programs
- Display type: Digit
- Delay start option

- Indications for: Filter, Tank, Condenser
- Condense tank position and capacity: Panel left recycled, 5.32 l
- Feet: 4 Adjustable Feet
- Full load capacity: 8.0 kg
- Door hinge: Right Reversible By User

#### Technical info

Product dimensions (mm)  
847 (H) x 596 (W) x 662 (D)

Price €820

Other great brands supplied by KKS

# AEG

Premium Kitchen Appliances



# BOSCH

Invented for life

Premium Kitchen Appliances



# Electrolux

Quality Kitchen Appliances



Premium Kitchen Appliances and  
Sinks & Taps



Quality Cooker Hoods



Kitchen Appliances



Quality Cooker Hoods

# SIEMENS

Kitchen Appliances

# KKS

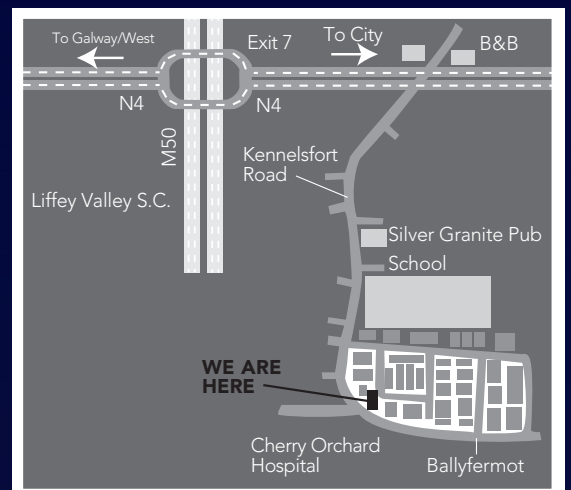
Kontinental Kitchen Supplies

Cucina Limited  
T/A Kontinental Kitchen Supplies  
Unit 85 , Cherry Orchard Industrial Estate  
Dublin 10, D10 DH39

Tel 01 6262314  
Fax 01 6262416

sales@kks.ie  
www.kks.ie

GPS: 53° 20' 42" N, 6° 22' 42" W



This brochure is correct at time of going to print.  
The colours and texture of our products are reproduced as accurately as possible  
within the limits of the printing process. Your statutory rights are not affected. E&OE.  
Designed and printed by T. Cassidy Printing.